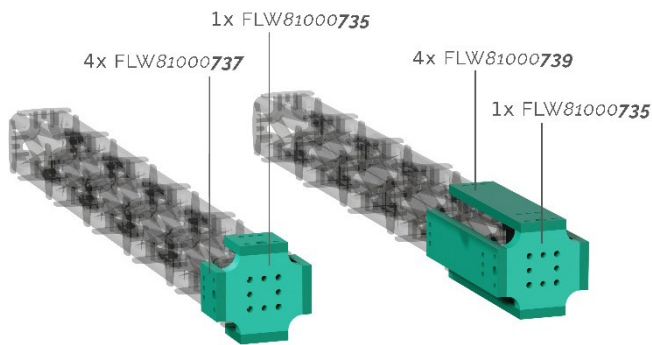
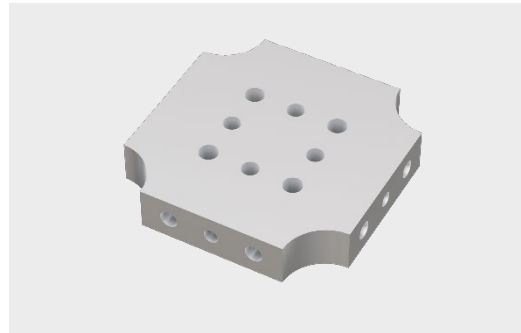


# FFT *lightweight* FibreTEC Mounting

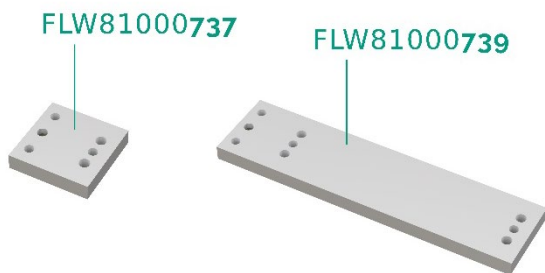
## Highlights:

- FLW81000**735**
- for FibreTEC Profile SW80
- connection plate
- For a connection in accordance with the specifications, you will need:
  - 4x support plates
  - 1x connection plate

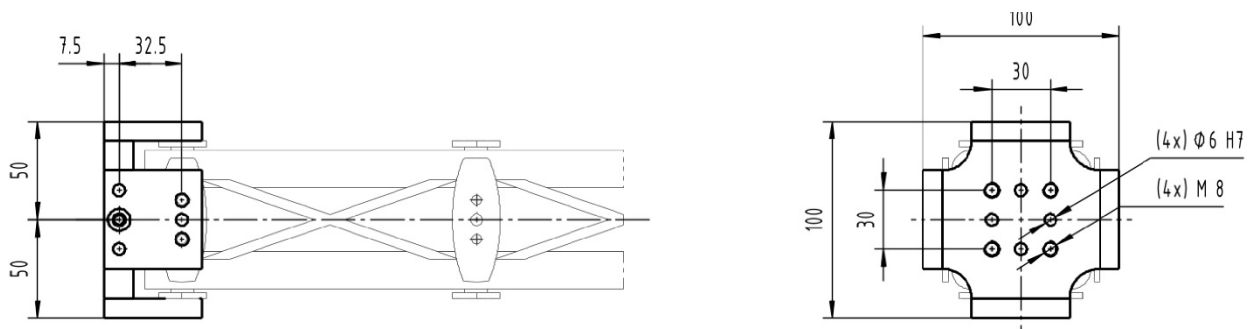


Basic Data	
Length	80 mm
Width	80 mm
Height	10 mm
Weight	Ca. 0,26 kg
Material	EN AW-7075

## Support plates:



## Example: FLW81000**735** / **737**



All information regarding the properties and usability of our products is provided for informational purposes only and does not constitute a guarantee of characteristics. The scope and content of our deliveries and services are determined solely by the respective contractual agreement. Technical data and illustrations are non-binding. We reserve the right to make changes at any time during technical developments.