



**FFT** *weldtec*  
**Basic**

*„FFT offers the **FFT**weldtec **Basic**, a robot-welding-gun-series not only for the automotive industry.“*

one step ahead in **INTELLIGENT** production systems



1

**FFT**weldtec **Basic**

Overview

2

**FFT**weldtec **Basic C-Gun**

Concept, Technical Specification and Benefits

3

**FFT**weldtec **Basic X-Gun**

Concept, Technical Specification and Benefits

4

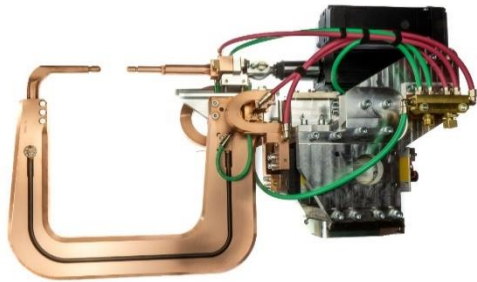
**FFT**weldtec **Basic XL-Gun**

Concept, Technical Specification and Benefits

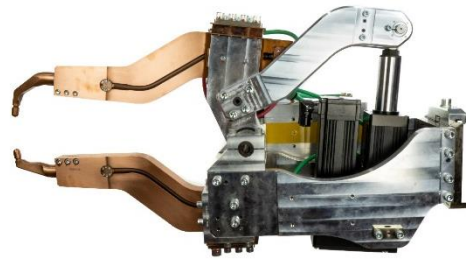
**FFT**weldtec **Basic**  
**C-Gun / X-Gun / XL-Gun**

# Overview

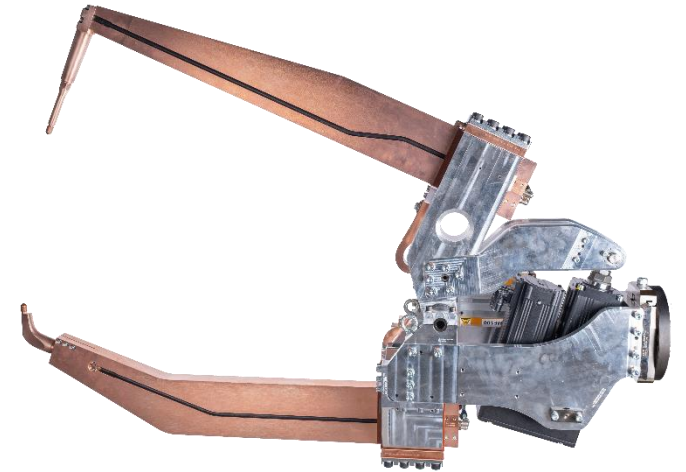
Representation from the **FFT**weldtec **Basic C-Gun / X-Gun / XL-Gun**



**Basic C-Gun**



**Basic X-Gun**



**Basic XL-Gun**

# 2

## FFT*weldtec* **Basic C-Gun**

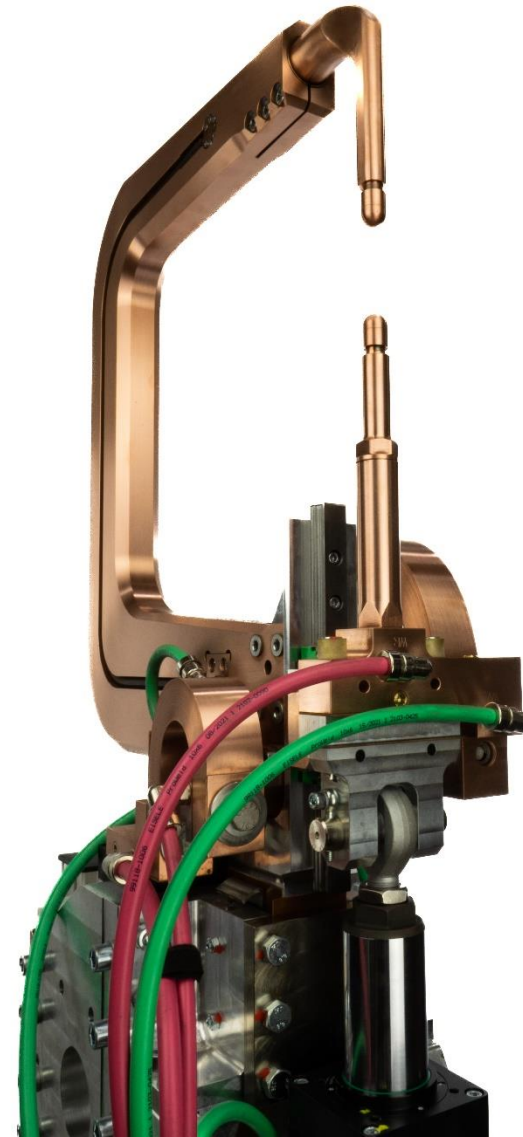
Concept, Technical Specification and Benefits

one step ahead in **INTELLIGENT** production systems

# Concept

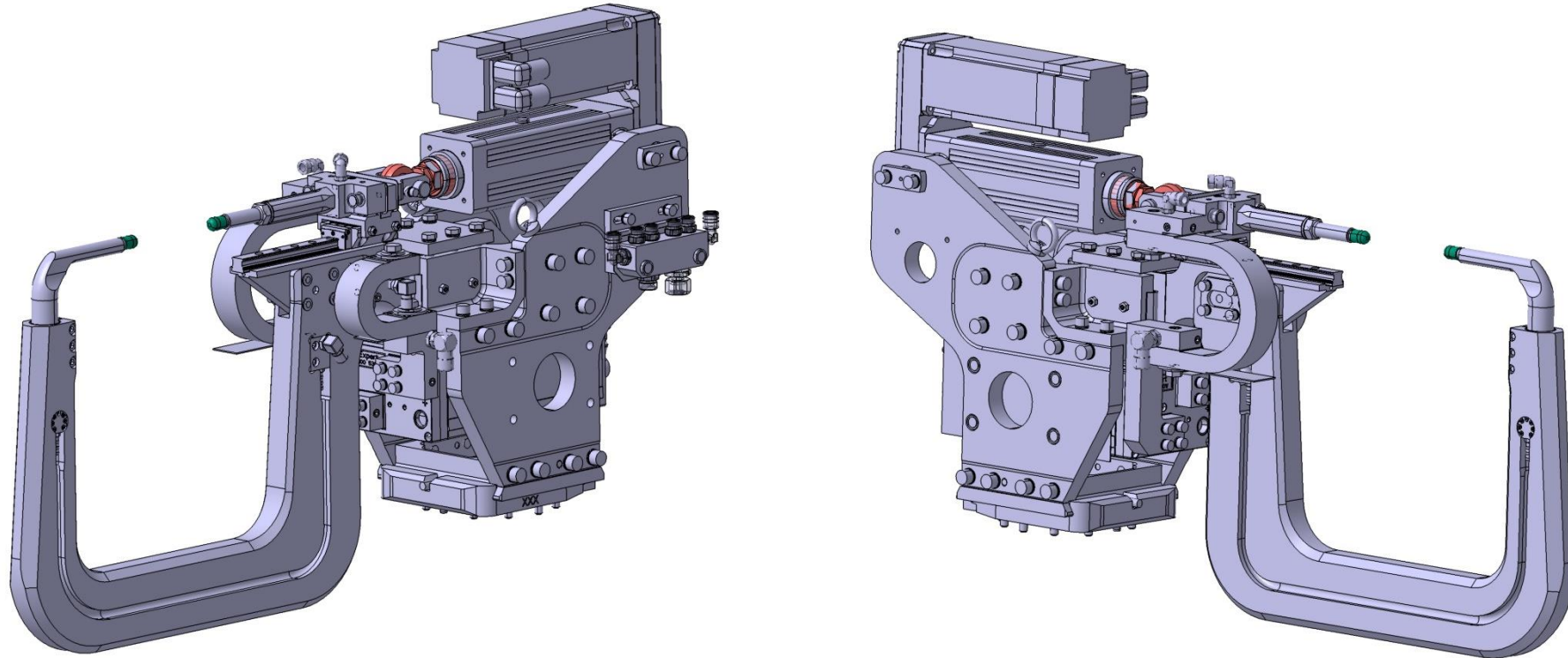
## FFT*weldtec* Basic C-Gun

- Application area steel
- Max. welding force 6000N
- Drive electromotive
- Opening stroke 125mm
- Transformer MF 100kVA
- Without gun compensation
- Weight approx. 80 - 100kg incl.  
quick change robot tool side



# Concept

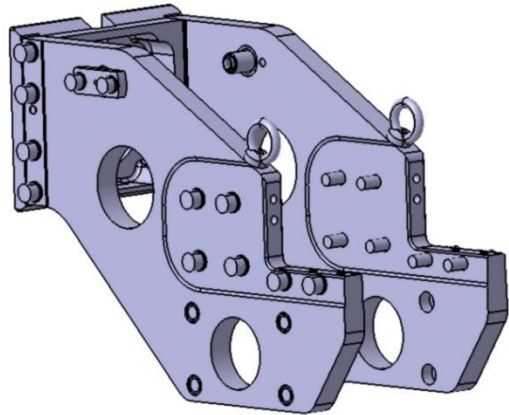
FFT*weldtec* **Basic C-Gun**



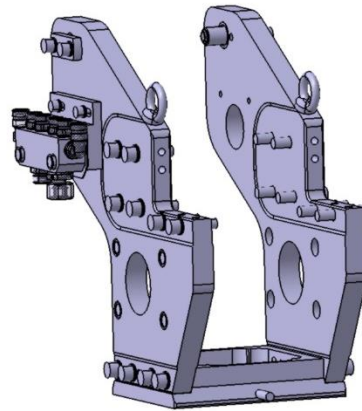
Assemblies such as motors, transformers, electrode arms and electrode shafts can be customized

# Concept - Connection

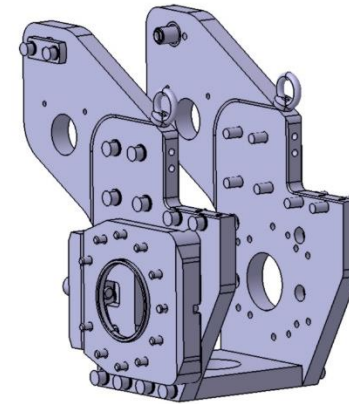
FFT*weldtec* **Basic C-Gun**



Rear connection



Bottom connection



Side connection

# Technical specification

## FFT*weldtec* **Basic C-Gun**

The **FFT*weldtec* Basic C-Gun** corresponds to standard market configurations

<b>Servo motor</b>	<b>SEW type CMSMB63/AP CMP63S or M</b> oil bath stored and water cooled
	axis-parallel ball screw in the version for KUKA, ABB and Fanuc
	<b>Tolomatic type CSWX</b> Grease lubricated and water cooled
	Roller screw in the version with KUKA, ABB and Fanuc
<b>Transformer</b>	<b>MF100kVA Bosch and Expert</b>
	Connection signal: AIDA-plug or Souriau Trim Trio
	Primary connection: Robifix
<b>Electrode arm</b>	Aluminium incl. multiple coating, last layer in copper
	Arm holder in the base body □ 80x45mm
<b>Electrode shaft</b>	Screw and plug-in shafts made of copper-chromium-zirconium (CuCr1Zr)
	Customization possible
<b>Water cooling</b>	1.5-circuit or 3-circuit design - Internal water cooling for the guns
	Gun side: plug-in tubing / plug-in connections, tubing with hoses from Createc for water supply in green and water return in red
	Customization possible



# Benefits

## FFT*weldtec* Basic C-Gun

- ✓ Stable and easy to maintain
- ✓ Main components available on the market
- ✓ Small interference contours
- ✓ Various adaptations to customer specifications possible



3

## FFT*weldtec* Basic X-Gun

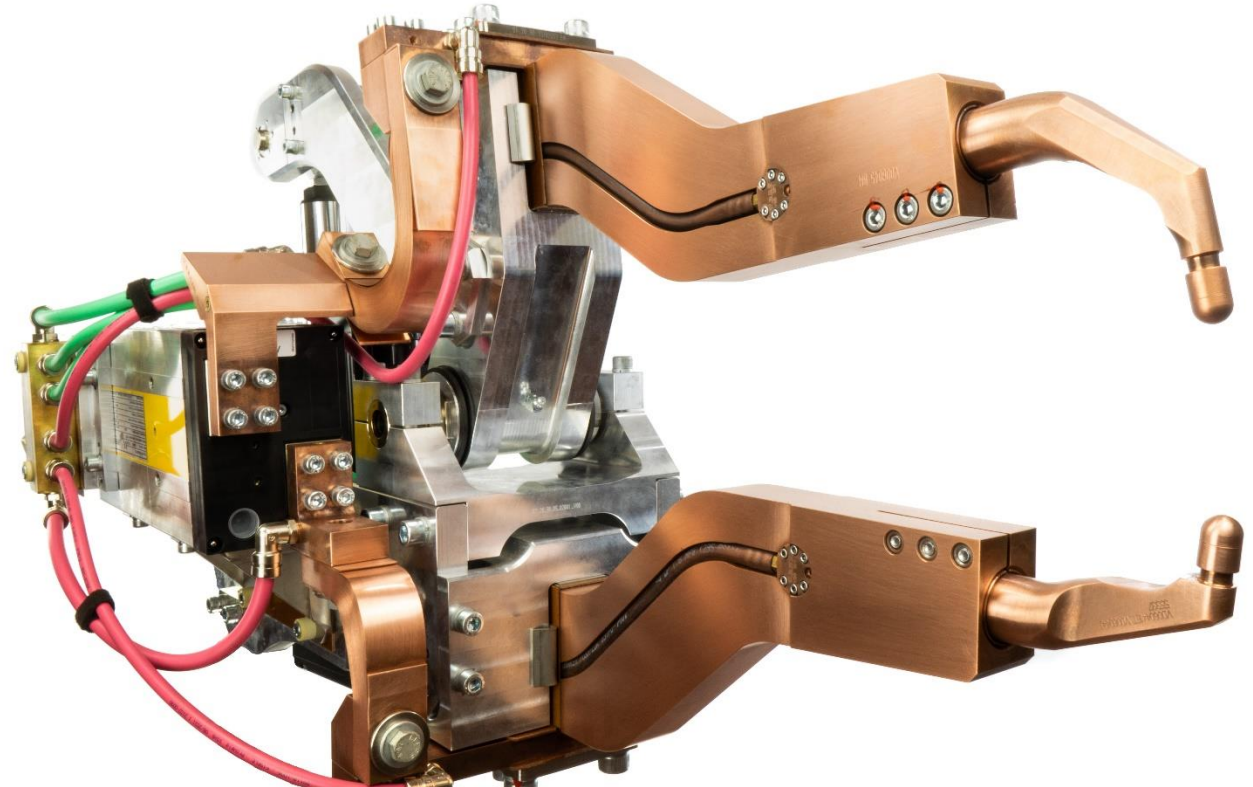
Concept, Technical Specification and Benefits

one step ahead in **INTELLIGENT** production systems

# Concept

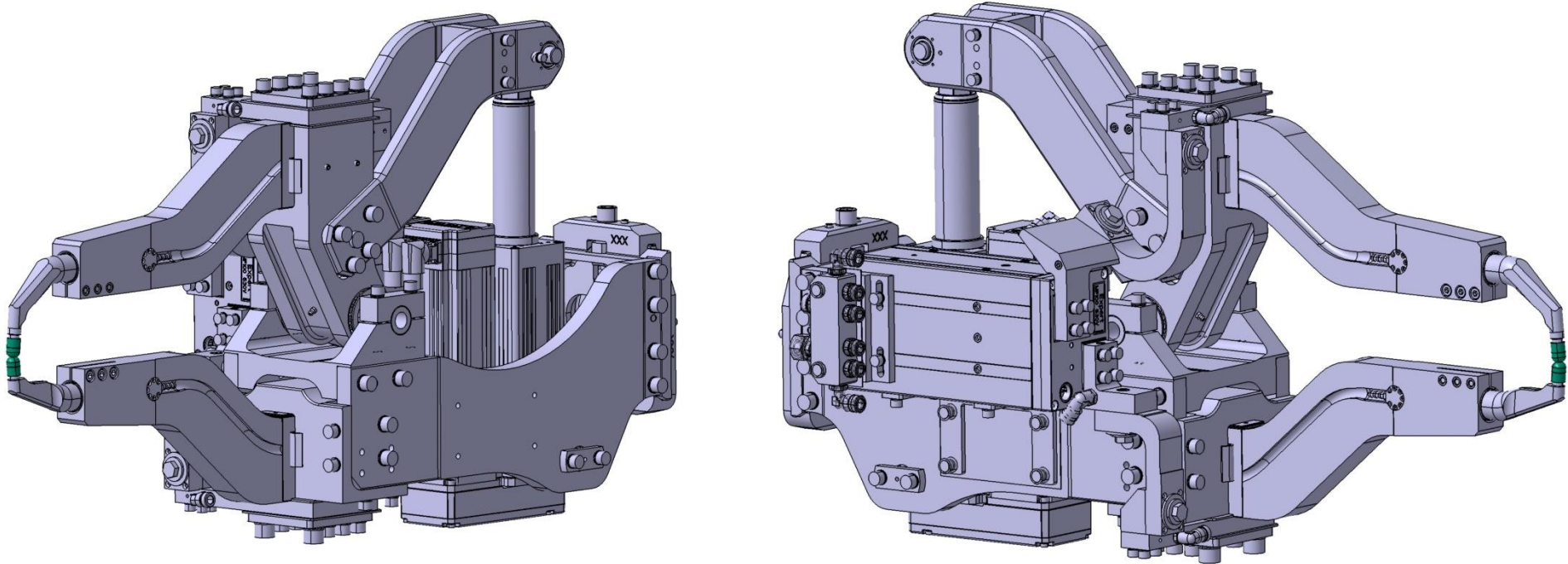
## FFT*weldtec* Basic X-Gun

- Application area steel
- Max. welding force 5000N at 800mm throat
- Drive electromotive
- Transformer MF 100kVA
- Without gun compensation
- Weight approx. 100 -125kg incl. quick change robot tool side



# Concept

FFT*weldtec* **Basic X-Gun**

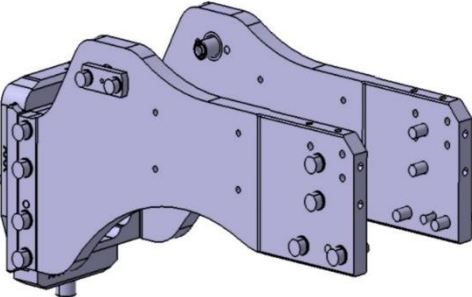


Assemblies such as motors, transformers, electrode arms and electrode shafts can be customized.

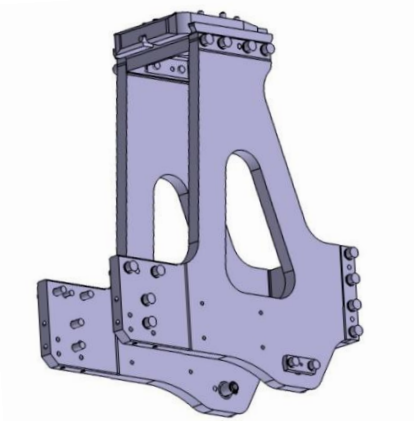
Lamellar taps in the secondary circuit instead of welding cables  
=> lower maintenance intervals.

# Concept - Connection

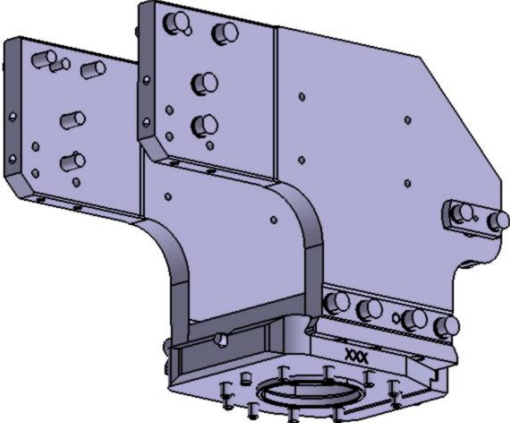
FFT*weldtec* **Basic X-Gun**



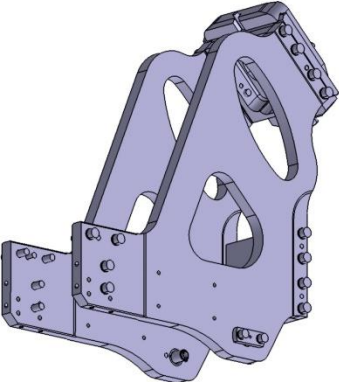
Rear connection



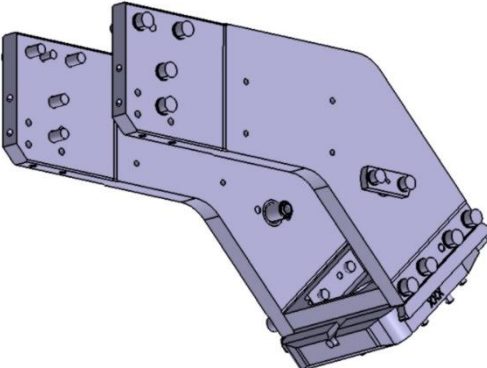
Top connection



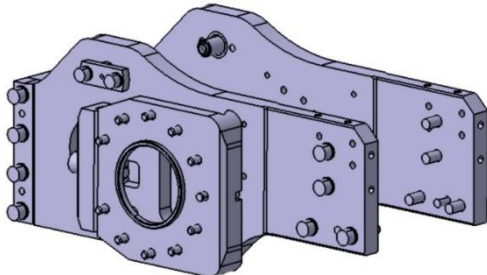
Bottom connection



Top connection 45°



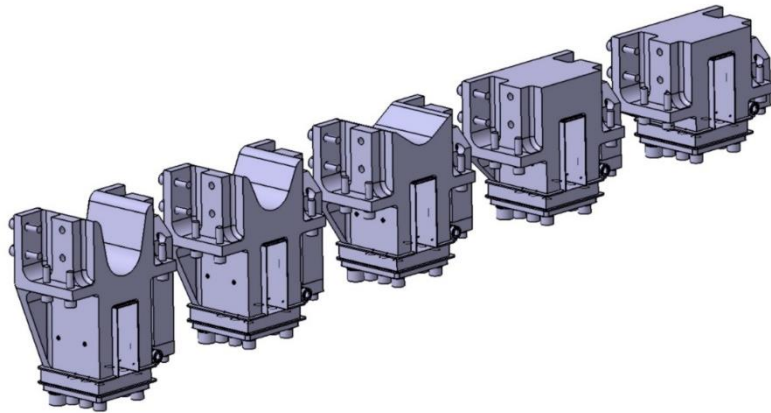
Bottom connection 45°



Side connection

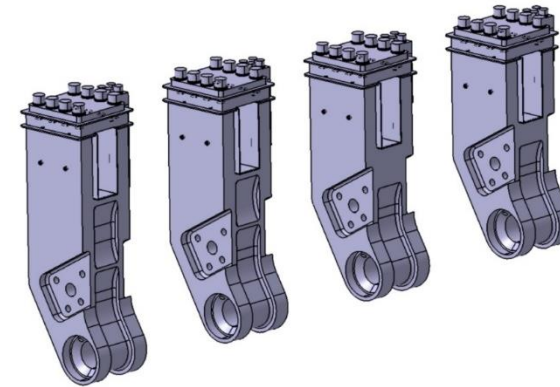
# Concept - Arm clamping

FFT*weldtec* **Basic X-Gun**



Fix arm clamping 100x40mm

- 112 mm
- 137 mm
- 162 mm
- 187 mm
- 212 mm
- 237 mm

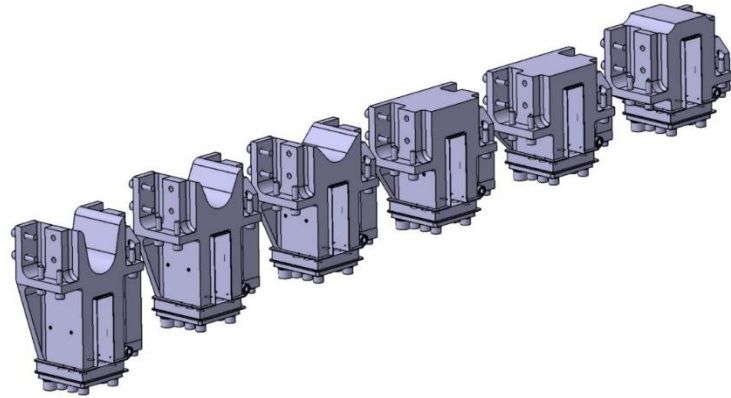


Movable arm clamping 100x40mm

- 137 mm
- 162 mm
- 187 mm
- 212 mm
- 237 mm

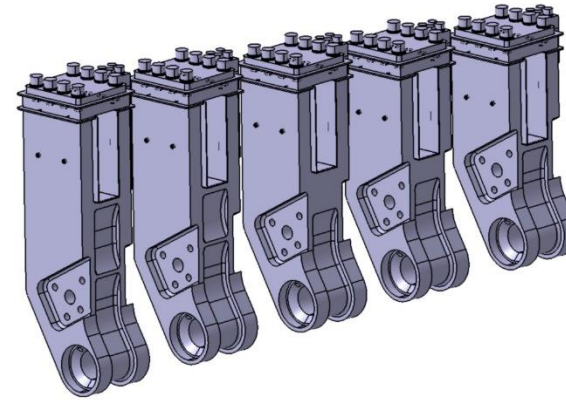
# Concept - Arm clamping

FFT*weldtec* **Basic X-Gun**



Fix arm clamping 125x40mm

- 112 mm
- 137 mm
- 162 mm
- 187 mm
- 212 mm
- 237 mm



Movable arm clamping 125x40mm

- 137 mm
- 162 mm
- 187 mm
- 212 mm
- 237 mm

# Technical specification

## FFT*weldtec* **Basic X-Gun**

The **FFT*weldtec* Basic X-Gun** corresponds to standard market configurations

<b>Servo motor</b>	<b>SEW type CMSMB63/AP CMP63L</b> oil bath stored and water cooled
	axis-parallel ball screw in the version for KUKA, ABB and Fanuc
	<b>Tolomatic type CSWX</b> Grease lubricated and water cooled
	Roller screw in the version with KUKA, ABB and Fanuc
<b>Transformer</b>	<b>MF100kVA Bosch and Expert</b>
	Connection signal: AIDA-Plug or Souriau Trim Trio
	Primary connection: Robifix
<b>Electrode arm</b>	Aluminium incl. multiple coating, last layer in copper
	□ 100x40mm or □ 125x40mm
<b>Electrode shaft</b>	Screw and plug-in shafts made of copper-chromium-zirconium (CuCr1Zr)
	Customization possible
<b>Water cooling</b>	1.5-circuit or 3-circuit design - Internal water cooling for the guns
	Gun side: plug-in tubing / plug-in connections, tubing with hoses from Createc for water supply in green and water return in red
	Customization possible



# Benefits

## FFT*weldtec* Basic X-Gun

- ✓ Stable and easy to maintain
- ✓ Main components available on the market
- ✓ Small interference contours
- ✓ Various adjustments to customer specifications are possible



4

**FFT***weldtec* **Basic XL-Gun**

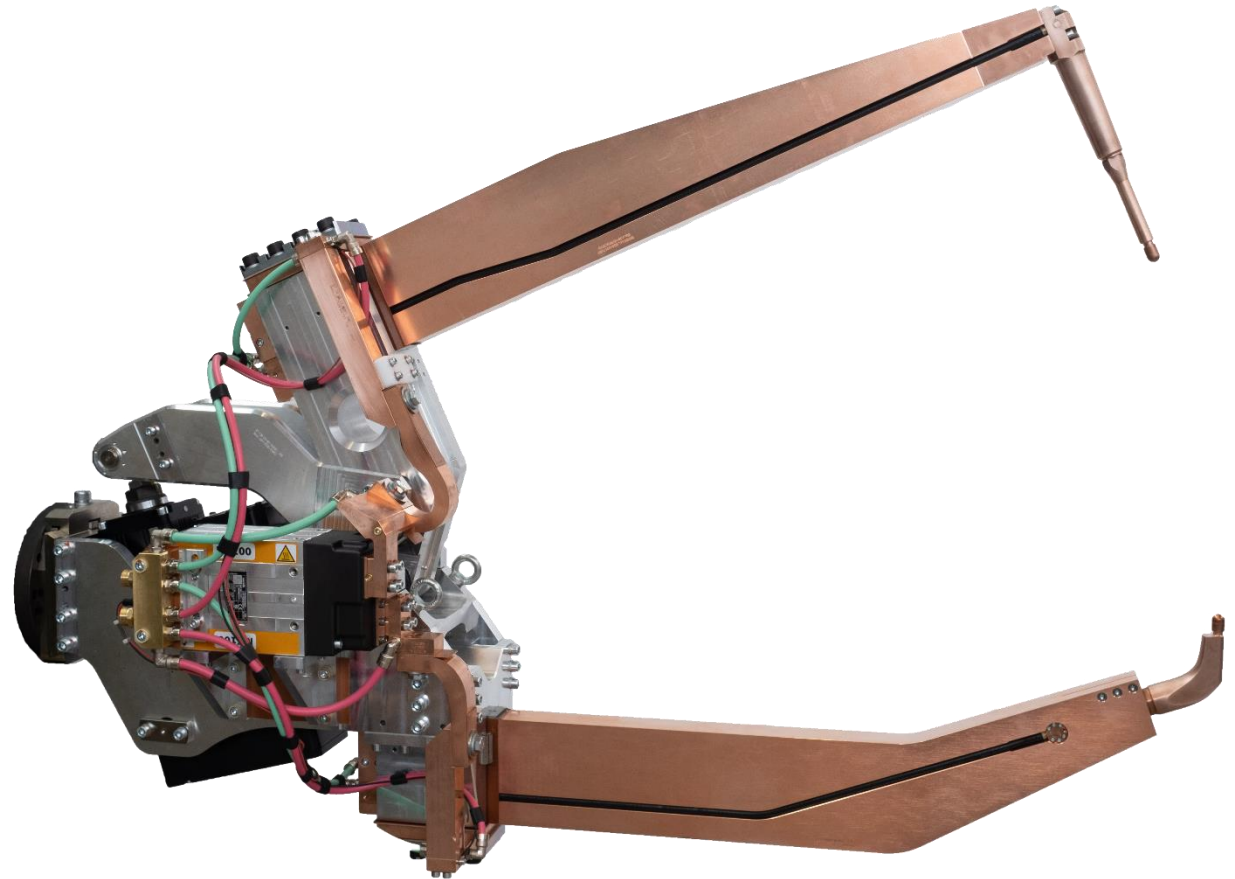
Concept, Technical Specification and Benefits

one step ahead in **INTELLIGENT** production systems

# Concept

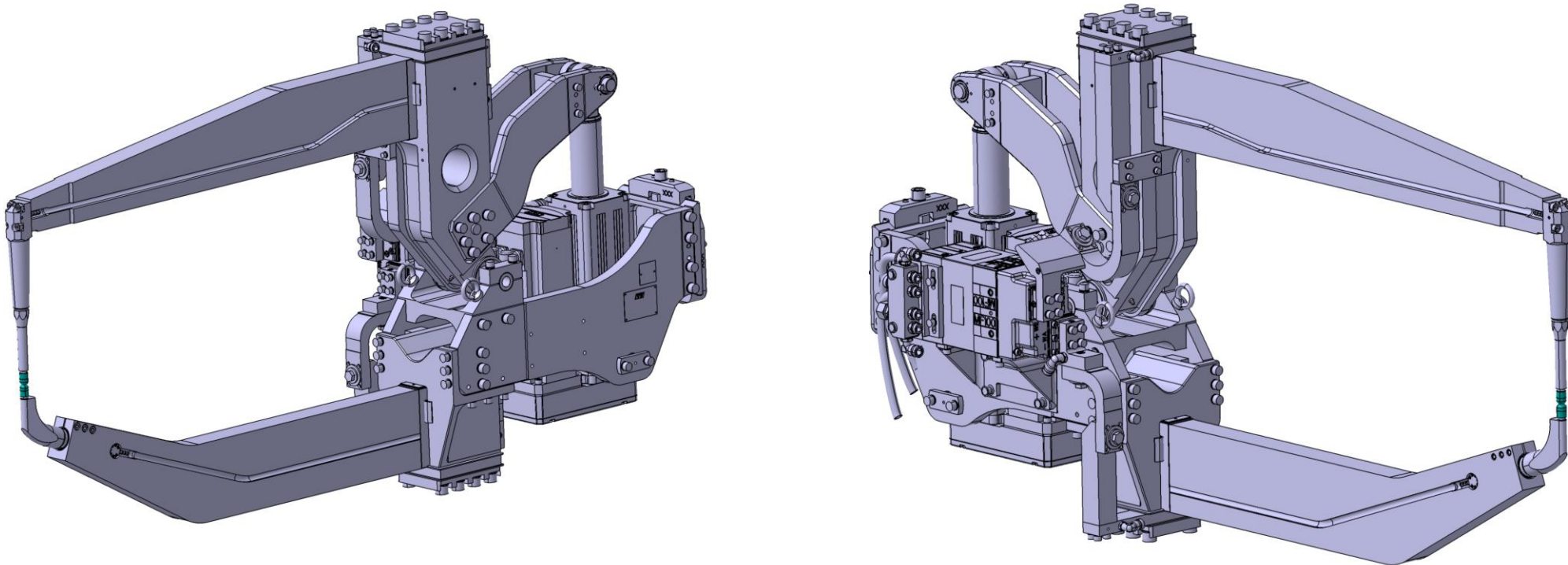
## FFT*weldtec* Basic XL-Gun

- Application area steel
- Max. welding force 8000N at 800mm throat
- Drive electromotive
- Transformer MF 100kVA
- Without gun compensation
- Weight approx. 120 -190kg incl. quick change robot tool side



# Concept

FFT*weldtec* **Basic XL-Gun**

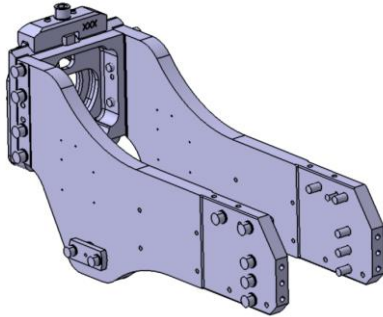


Assemblies such as motors, transformers, electrode arms and electrode shafts can be customized.

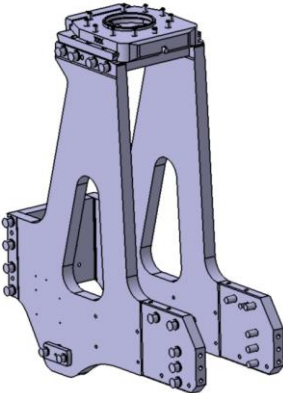
Lamellar taps in the secondary circuit instead of welding cables  
=> lower maintenance intervals

# Concept - Connection

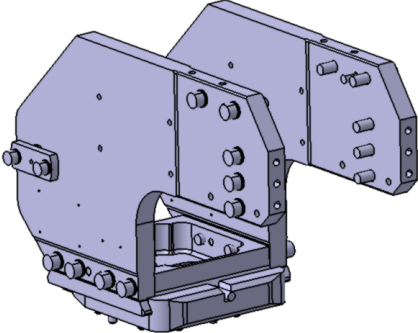
FFT*weldtec* **Basic XL-Gun**



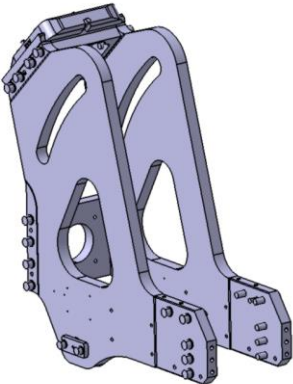
Rear connection



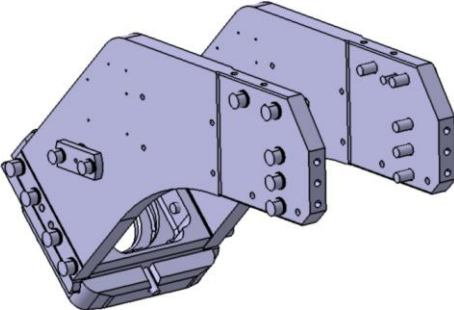
Top connection



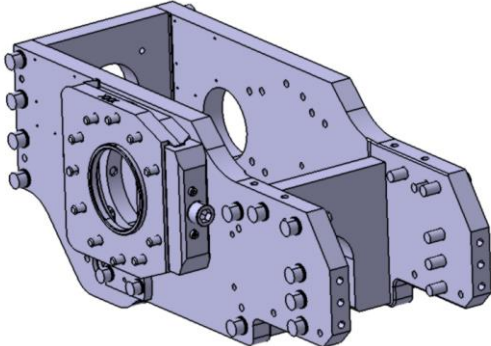
Bottom connection



Top connection 45°



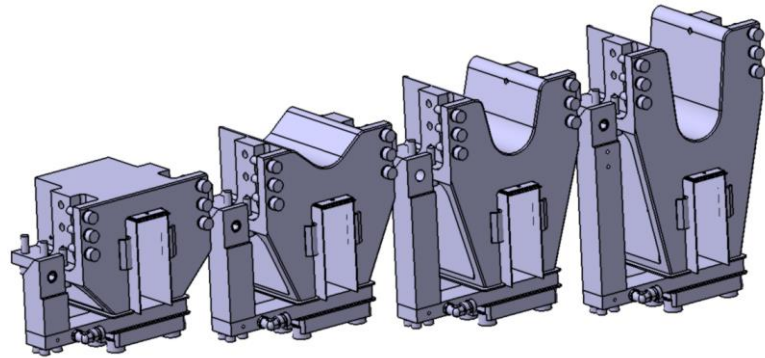
Bottom connection 45°



Side connection

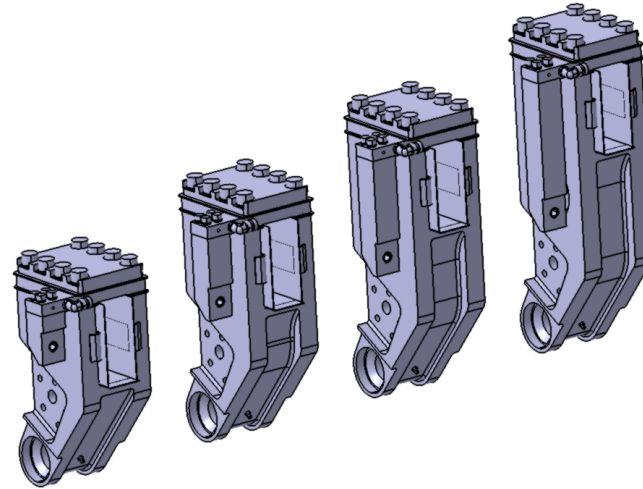
# Concept – Arm clamping

FFT*weldtec* **Basic XL-Gun**



Fix arm clamping 125x50mm

- 137 mm
- 187 mm
- 237 mm
- 287 mm

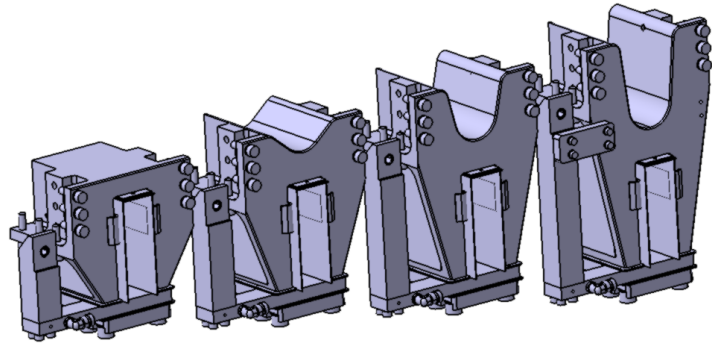


Movable arm clamping 125x50mm

- 137 mm
- 187 mm
- 237 mm
- 287 mm

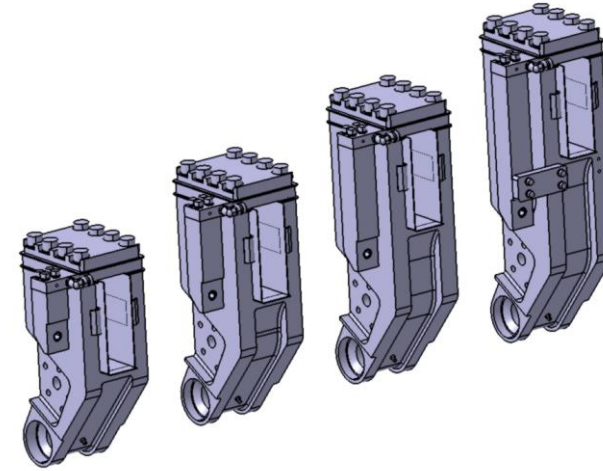
# Concept – Arm clamping

FFT*weldtec* **Basic XL-Gun**



Fix arm clamping 150x50mm

- 137 mm
- 187 mm
- 237 mm
- 287 mm



Movable arm clamping 150x50mm

- 137 mm
- 187 mm
- 237 mm
- 287 mm

# Technical specification

## FFT*weldtec* **Basic XL-Gun**

The **FFT*weldtec* Basic XL-Gun** corresponds to standard market configurations

<b>Servo motor</b>	<b>SEW Typ CMSMB71/AP CMP71M/L</b> oil bath stored and water cooled
	axis-parallel ball screw in the version for KUKA, ABB and Fanuc
	<b>Tolomatic type CSWX</b> Grease lubricated and water cooled
	Roller screw in the version with KUKA, ABB and Fanuc
<b>Transformer</b>	<b>MF100kVA Bosch and Expert</b>
	Connection signal: AIDA-Plug or Souriau Trim Trio
	Primary connection: Robifix
<b>Elektrode arme</b>	Aluminium incl. multiple coating, last layer in copper
	□ 125x50mm bzw. □ 150x50mm
<b>Electrode shaft</b>	Screw and plug-in shafts made of copper-chromium-zirconium (CuCr1Zr)
	Customization possible
<b>Water cooling</b>	1.5-circuit or 3-circuit design - Internal water cooling for the guns
	Gun side: plug-in tubing / plug-in connections, tubing with hoses from Createc for water supply in green and water return in red
	Customization possible



# Benefits

## FFT*weldtec* **Basic XL-Gun**

- ✓ Stable and easy to maintain
- ✓ Main components available on the market
- ✓ Small interference contours
- ✓ Various adjustments to customer specifications are possible





# CONTACT

## Your personal contact person

---

Peter Kunzmann  
VP / Sales Manager  
Joining Technology

Holger Krusch  
Abteilungsleiter  
Welding & Joining Technology

FFT Products GmbH  
Weserstraße 24-26, DE-36043 Fulda  
Mobil: +49 (0) 160-97706313  
E-Mail: [peter.kunzmann@fft.de](mailto:peter.kunzmann@fft.de)  
[www.fft.de](http://www.fft.de)

FFT Produktionssysteme GmbH & Co. KG  
Schleyerstraße 1, DE-36041 Fulda  
Tel.: +49 (0) 661 2926-328  
Mobil: +49 (0) 171-8765319  
E-Mail: [holger.krusch@fft.de](mailto:holger.krusch@fft.de)  
[www.fft.de](http://www.fft.de)



# THANK YOU

Feel free to contact us.

WWW.FFT.DE | INFO@FFT.DE  
TEL.: +49 (0) 661 2926-0

